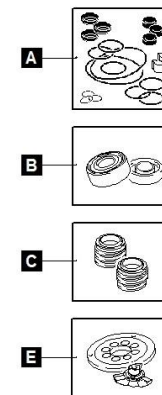
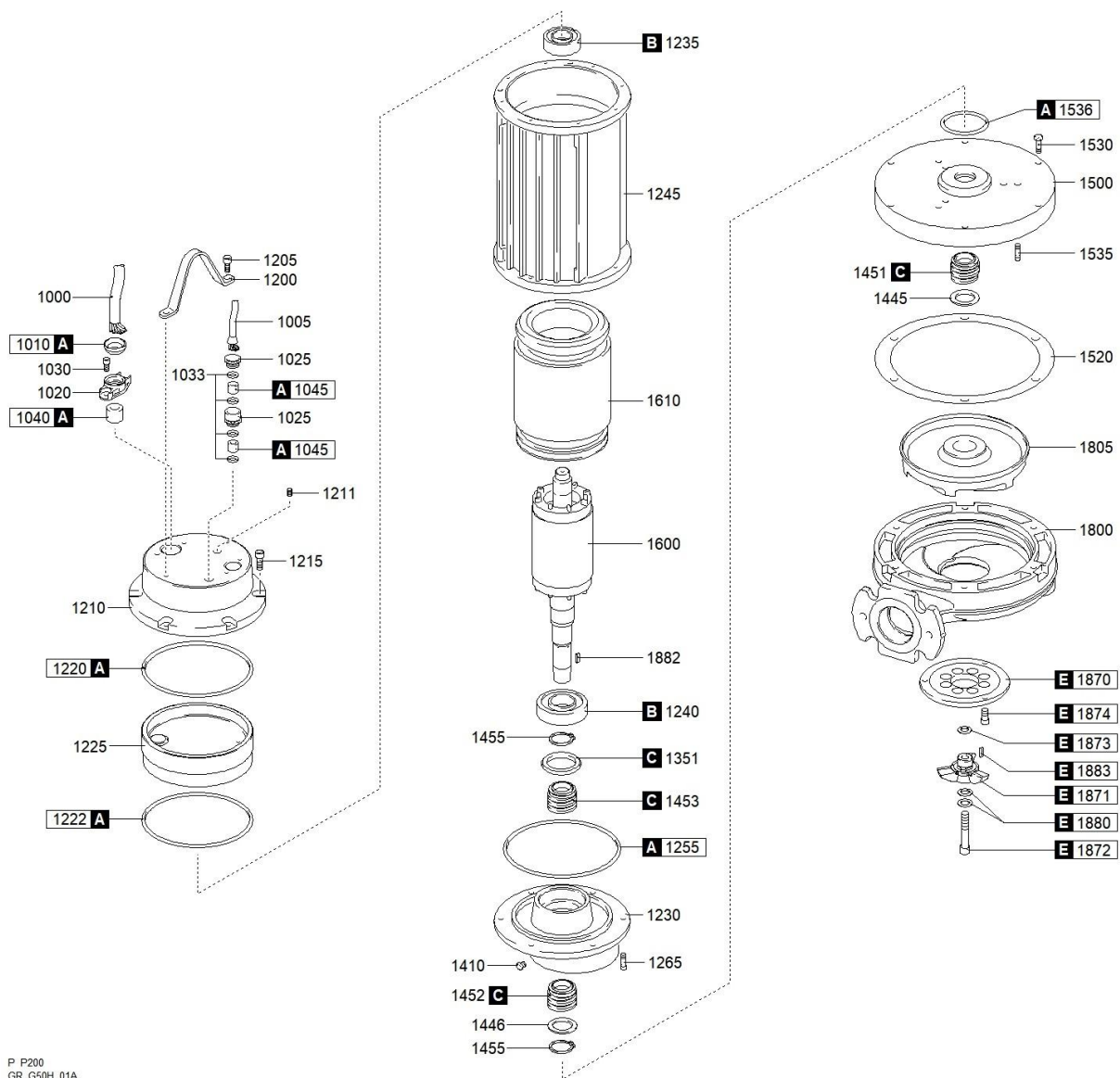


0304.003 - GRP 750/2/G50H A0HT5 NGTAR8104YN00NN









better together



0304.003 - GRP 750/2/G50H A0HT5 NGTAR8104YN00NN

	 	Scanregn varenummer	 	New Code	Description	Antal	
A		51406085518-S/ET		9050.013	GASKETS KIT	1	
C		5140372134+35		9050.127	MECHANICAL SEALS KIT	1	
E		5140111116+17		9050.203	CUTTING SYSTEM KIT	1	
B				9050.170	BEARINGS KIT	1	
1000		5140373900		2502NN00334	CAVO POTENZA	1	
1010		51406101257		2354PL00003	RING NUT [POWER CABLE]	1	
1020		51406111254		2354AG00003	CABLE GLAND [POWER CABLE]	1	
1030				2708XX00005	SCREW - CABLE GLAND [POWER CABLE]	2	
1040		51406101256		2356GM00025	RUBBER GASKET [POWER CABLE]	1	
1050				2732AG00003	COLLAR CLAMP [POWER CABLE]	2	
1200		51406101252		2352XX00003	HANDLE	1	
1205				2708XX00005	SCREW [HANDLE >> COVER]	2	
1210		51406101221		2321GG00030	COVER	1	
1211				2701XX00004	CAP [TIGHTNESS TEST]	1	
1215				2708XX00122	SCREW [COVER >> MOTOR CASE]	6	
1220		51406105518		2717GM00037	GASKET [COVER >> UPPER BEARING HOLDER]	1	
1225		51406101206		2306GG00023	UPPER BEARING HOLDER	1	
1230		5140371205		2305GG00064	LOWER BEARING HOLDER	1	
1235		51806308		2729NN00017	UPPER BEARING	1	
1240		51806308		2729NN00017	LOWER BEARING	1	
1245		5140371210		2310GG00042	MOTOR CASE	1	
1255		51406105518		2717GM00037	GASKET [MOTOR CASE >> LOWER BEARING HOLDER]	1	
1265				2708XX00125	SCREW [LOWER BEARING HOLDER >> MOTOR CASE]	6	
1351				2379GM00033	LOWER LIP SEAL [LOWER BEARING]	1	
1410		5140375427		2701BB00001	CAP [OIL CHAMBER]	1	
1445		51406055280		2705XX00016	WASHER [1st MECHANICAL SEAL]	1	
1446		51406055280		2705XX00016	WASHER [2nd MECHANICAL SEAL]	1	
1451		5140372134+35		2300NN00041	1st MECHANICAL SEAL	1	
1452		5140372134+35		2300NN00041	2nd MECHANICAL SEAL	1	
1455				2703XX00004	SEEGER [1st MECHANICAL SEAL >> 2nd MECHANICAL SEAL]	1	
1500		5140371362		2362GG00079	PUMP PLATE	1	
1520		5140341454		2750NN00004	GASKET [PUMP PLATE >> PUMP BODY]	2	
1530				2708XX00123	SCREW [PUMP PLATE >> PUMP BODY]	6	
1535				2708XX00122	SCREW [PUMP PLATE >> LOWER BEARING HOLDER]	6	
1536		51406055545		2717GM00087	GASKET [PUMP PLATE >> LOWER BEARING HOLDER]	1	
1600		5140371202		2302XX00016	SHAFT WITH ROTOR	1	
1610		5140373400		2308NN00078	WOUND STATOR	1	
1800				2125GG00298	PUMP BODY	1	

1805		2141GG01194	IMPELLER	1	
1870	5140111117	2117XX00002	CUTTING DISK	1	
1871	5140111116+17	2116XX00005	CHOPPER KNIFE	1	
1872		2708XX00122	LOCKING CHOPPER KNIFE	6	
1873		2705XX00031	WASHER [CHOPPER KNIFE]	1	
1874		2708XX00099	SCREW [CUTTING DISK >> PUMP BODY]	3	
1880		2706AG00003	DISTANCE RING [CHOPPER KNIFE]	2	
1882	51406055452	2704XX00005	KEY [IMPELLER]	1	
1883	5140225452	2704XX00003	KEY [CHOPPER KNIFE]	1	