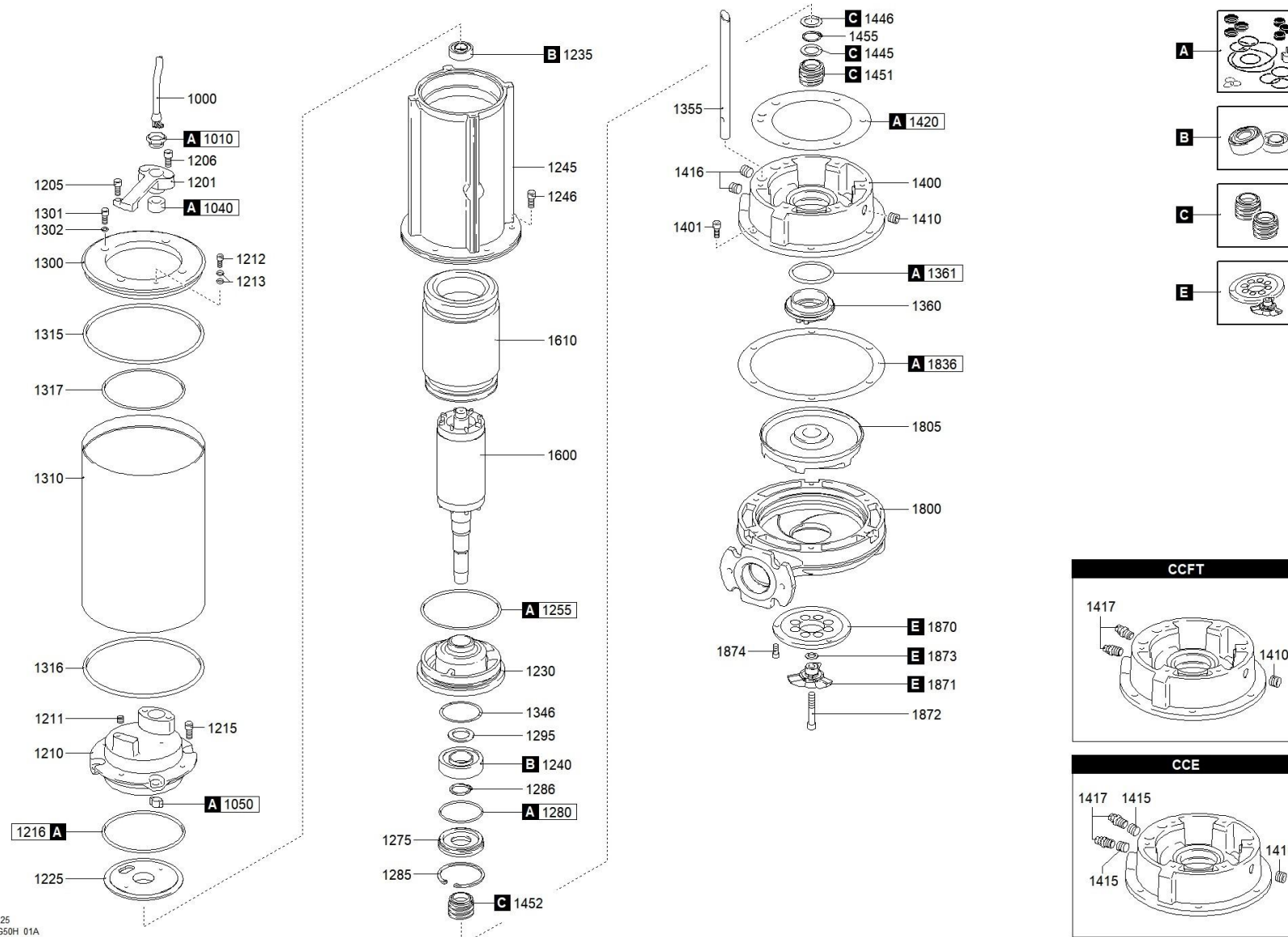




better together

0535.002 - GRN 300/2/G50H A1DT5 NGTAB51040N00NN



N N125
GR G50H 01A



better together



0535.002 - GRN 300/2/G50H A1DT5 NGTAB51040N00NN

	Scanregn Varenummer	Description	Antal
A	5140331000A	GASKETS KIT	1
C	5140332134+35	MECHANICAL SEALS KIT	1
E	5140331116+17	CUTTING SYSTEM KIT	1
B		BEARINGS KIT	1
1000	5140333900	CAVO POTENZA	1
1010	5140331257	RING NUT [POWER CABLE]	1
1040	5140331253	RUBBER GASKET [POWER CABLE]	1
1050		COLLAR CLAMP [POWER CABLE]	1
1201	5140331253	CABLE GLAND HANDLE	1
1205		SCREW [HANDLE >> COVER]	2
1206		SCREW [CABLE GLAND HANDLE >> COVER]	2
1210	5140331221	COVER	1
1211		CAP [TIGHTNESS TEST]	1
1215		SCREW [COVER >> MOTOR CASE]	2
1216	5140335530	GASKET [COVER >> MOTOR CASE]	1
1225	5140331206	UPPER BEARING HOLDER	1
1230	5140331205	LOWER BEARING HOLDER	1
1235	518062032Z	UPPER BEARING	1
1240	51806306	LOWER BEARING	1
1245	5140331210	MOTOR CASE	1
1246		SCREW [MOTOR CASE >> OIL CHAMBER]	6
1255	5140335518	GASKET [MOTOR CASE >> LOWER BEARING HOLDER]	1
1275	5140331387	LOWER BEARING FLANGE	1
1280	5140335534	GASKET [LOWER BEARING FLANGE]	1
1285		SEEGER [LOWER BEARING FLANGE >> MECHANICAL SEAL]	1
1286		SEEGER [LOWER BEARING >> LOWER BEARING FLANGE]	1
1295		UPPER DISTANCE RING [LOWER BEARING]	1
1346	5140335555	WAVE SPRING	1
1360	5140331386	BUSH [OIL CHAMBER]	1
1361	5140335533	GASKET - BUSH [OIL CHAMBER]	1
1400	5140331385	OIL CHAMBER	1
1401		SCREW [OIL CHAMBER >> PUMP BODY]	2
1401		SCREW [OIL CHAMBER >> PUMP BODY]	2
1410		CAP [OIL CHAMBER]	1
1420	5140331455	GASKET [LOWER BEARING HOLDER >> OIL CHAMBER]	1
1445		WASHER [1st MECHANICAL SEAL]	1
1446		WASHER [2nd MECHANICAL SEAL]	1
1451		1st MECHANICAL SEAL	1

1452		2nd MECHANICAL SEAL	1
1455		SEEGER [1st MECHANICAL SEAL >> 2nd MECHANICAL SEAL]	1
1600	5140331202	SHAFT WITH ROTOR	1
1610	5140333400	WOUND STATOR	1
1800	5140331127	PUMP BODY	1
1805	5140331141	IMPELLER	1
1836	5140331454	GASKET [OIL CHAMBER >> PUMP PLATE]	2
1870	5140331117	CUTTING DISK	1
1871		CHOPPER KNIFE	1
1872		LOCKING CHOPPER KNIFE	1
1873		WASHER [CHOPPER KNIFE]	3
1874		SCREW [CUTTING DISK >> PUMP BODY]	3