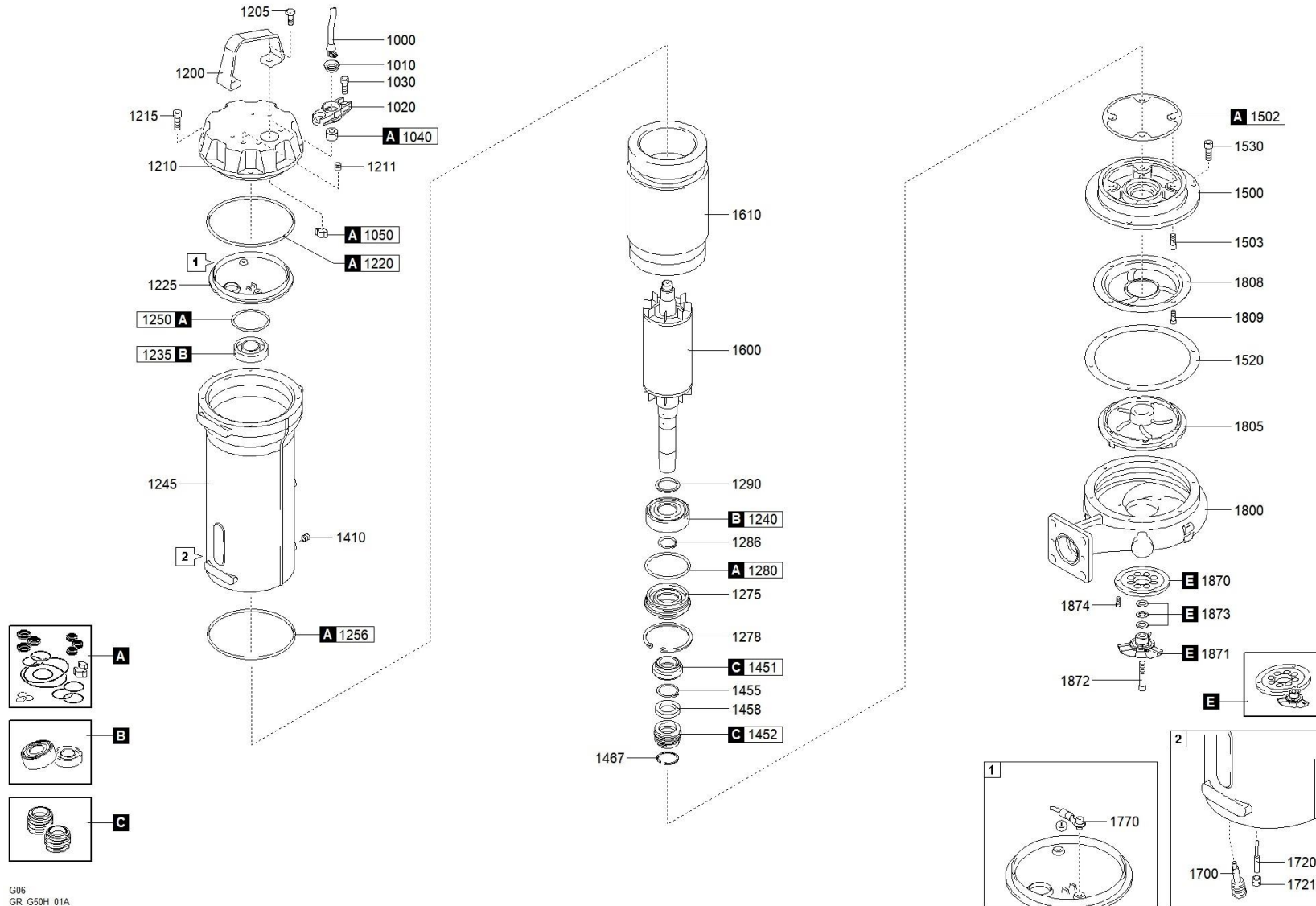




better together

## 1465.002 - GRG 300/2/G50H C0ET5 NGTSB51040N00NN



G06  
GR G50H 01A



better together



1465.002 - GRG 300/2/G50H C0ET5 NGTSB51040N00NN

	Scanregn varenummer	Description	Antal
A	51413300A	GASKETS KIT	1
C	51413300C	MECHANICAL SEALS KIT	1
E	51413300E	CUTTING SYSTEM KIT	1
B		BEARINGS KIT	1
1000		CAVO POTENZA	1
1010		RING NUT [POWER CABLE]	1
1020		CABLE GLAND [POWER CABLE]	1
1030		SCREW - CABLE GLAND [POWER CABLE]	4
1040		RUBBER GASKET [POWER CABLE]	1
1050		COLLAR CLAMP [POWER CABLE]	1
1200		HANDLE	1
1205		SCREW [HANDLE >> COVER]	2
1210		COVER	1
1211		CAP [TIGHTNESS TEST]	1
1215		SCREW [COVER >> MOTOR CASE]	4
1220		GASKET [COVER >> UPPER BEARING HOLDER]	1
1225		UPPER BEARING HOLDER	1
1235	518062032C	UPPER BEARING	1
1240	51806306	LOWER BEARING	1
1245		MOTOR CASE	1
1250		GASKET [UPPER BEARING]	1
1256		GASKET [MOTOR CASE >> PUMP PLATE]	1
1275		LOWER BEARING FLANGE	1
1278		SEEGER [LOWER BEARING FLANGE]	1
1280		GASKET [LOWER BEARING FLANGE]	1
1286		SEEGER [LOWER BEARING >> LOWER BEARING FLANGE]	1
1290		DISTANCE RING [LOWER BEARING]	1
1410		CAP [OIL CHAMBER]	1
1451		1st MECHANICAL SEAL	1
1452		2nd MECHANICAL SEAL	1
1455		SEEGER [1st MECHANICAL SEAL >> 2nd MECHANICAL SEAL]	1
1458		DISTANCE RING [1st MECHANICAL SEAL >> 2nd MECHANICAL SEAL]	1
1467		SEEGER [2nd MECHANICAL SEAL]	1
1500		PUMP PLATE	1
1502		GASKET [PUMP PLATE]	1
1503		SCREW [PUMP PLATE >> MOTOR CASE]	4
1520		GASKET [PUMP PLATE >> PUMP BODY]	2
1530		SCREW [PUMP PLATE >> PUMP BODY]	4

1600		SHAFT WITH ROTOR	1
1610	514133001610	WOUND STATOR	1
1700		HUMIDITY PROBE [OIL CHAMBER]	1
1800		PUMP BODY	1
1805	514133001805	IMPELLER	1
1870		CUTTING DISK	1
1871		CHOPPER KNIFE	1
1872		LOCKING CHOPPER KNIFE	1
1873		WASHER [CHOPPER KNIFE ]	2
1874	5140341174	SCREW [CUTTING DISK >> PUMP BODY]	3