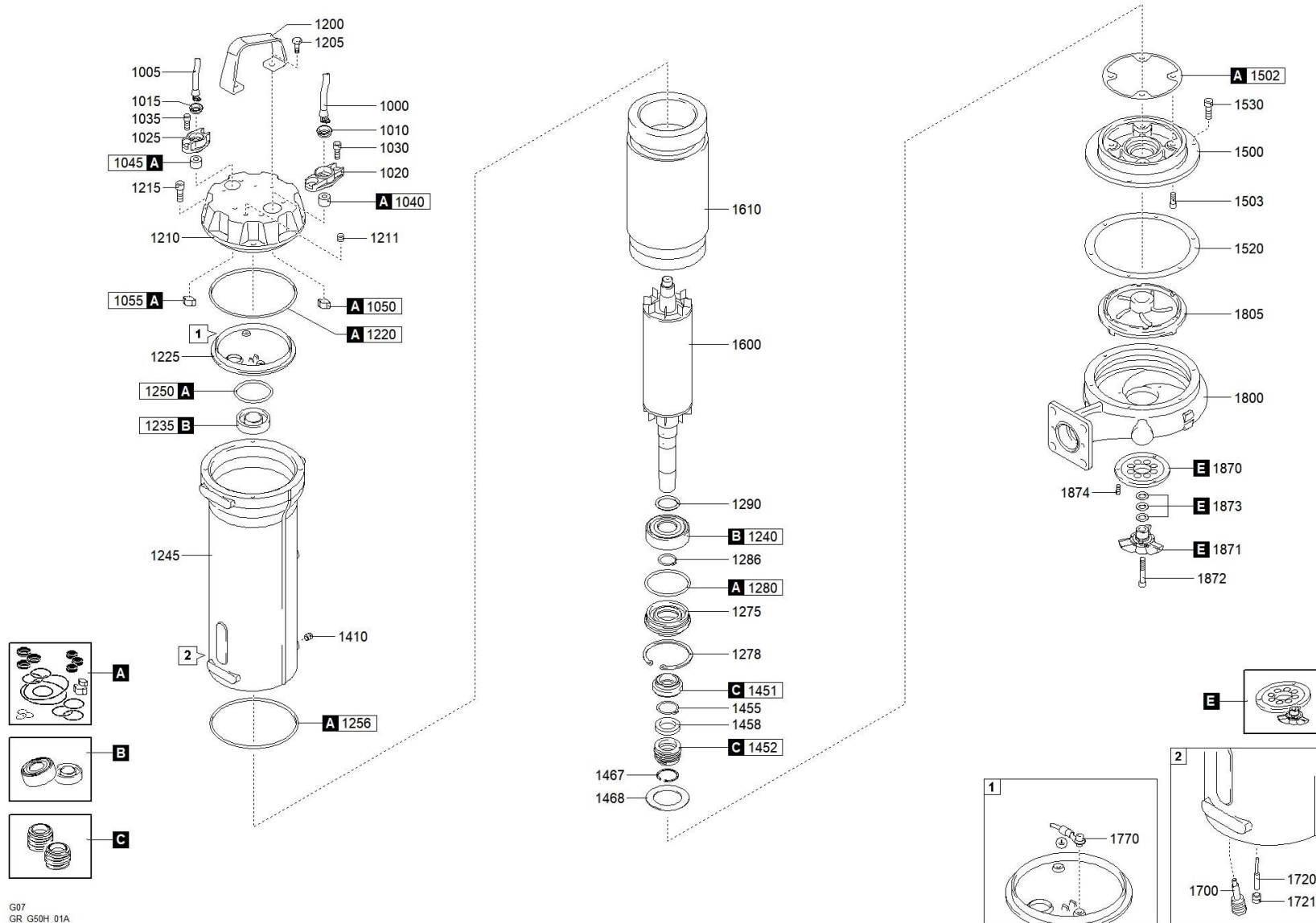




better together

1507.002 - GRG 1000/2/G50H A0FT5 NGTSB51040N00NN



G07
GR G50H 01A



better together



1507.002 - GRG 1000/2/G50H A0FT5 NGTSB51040N00NN

	↕	Scanregn Varenummer	↕	Description	Antal
A		51413900A		GASKETS KIT	1
C		51413900C		MECHANICAL SEALS KIT	1
E		51413900E		CUTTING SYSTEM KIT	1
B				BEARINGS KIT	1
1000				CAVO POTENZA	1
1010				RING NUT [POWER CABLE]	1
1020				CABLE GLAND [POWER CABLE]	1
1030				SCREW - CABLE GLAND [POWER CABLE]	2
1040				RUBBER GASKET [POWER CABLE]	1
1050				COLLAR CLAMP [POWER CABLE]	1
1200				HANDLE	1
1205				SCREW [HANDLE >> COVER]	2
1210				COVER	1
1211				CAP [TIGHTNESS TEST]	1
1211				CAP [TIGHTNESS TEST]	1
1215				SCREW [COVER >> MOTOR CASE]	4
1220				GASKET [COVER >> UPPER BEARING HOLDER]	1
1225				UPPER BEARING HOLDER	1
1235		518063052Z		UPPER BEARING	1
1240		518063072ZC3		LOWER BEARING	1
1245				MOTOR CASE	1
1250				GASKET [UPPER BEARING]	1
1256				GASKET [MOTOR CASE >> PUMP PLATE]	1
1275				LOWER BEARING FLANGE	1
1278				SEEGER [LOWER BEARING FLANGE]	1
1280				GASKET [LOWER BEARING FLANGE]	1
1286				SEEGER [LOWER BEARING >> LOWER BEARING FLANGE]	1
1290				DISTANCE RING [LOWER BEARING]	1
1410				CAP [OIL CHAMBER]	1
1410				CAP [OIL CHAMBER]	1
1451				1st MECHANICAL SEAL	1
1452				2nd MECHANICAL SEAL	1
1455				SEEGER [1st MECHANICAL SEAL >> 2nd MECHANICAL SEAL]	1
1467				SEEGER [2nd MECHANICAL SEAL]	1
1468				DISTANCE RING [2nd MECHANICAL SEAL]	1
1500				PUMP PLATE	1
1502				GASKET [PUMP PLATE]	1
1503				SCREW [PUMP PLATE >> MOTOR CASE]	4

1520		GASKET [PUMP PLATE >> PUMP BODY]	2
1530		SCREW [PUMP PLATE >> PUMP BODY]	4
1600		SHAFT WITH ROTOR	1
1610	514139001610	WOUND STATOR	1
1700		HUMIDITY PROBE [OIL CHAMBER]	1
1800	514135501800	PUMP BODY	1
1805	514139001805	IMPELLER	1
1808		DISTANCE RING [PUMP PLATE >> IMPELLER]	1
1809		SCREW [DISTANCE RING >> PUMP PLATE]	4
1870	51413900E	CUTTING DISK	1
1871	51413900E	CHOPPER KNIFE	1
1872	51413900E	LOCKING CHOPPER KNIFE	1
1873	51413900E	WASHER [CHOPPER KNIFE]	3
1874	5140341174	SCREW [CUTTING DISK >> PUMP BODY]	3