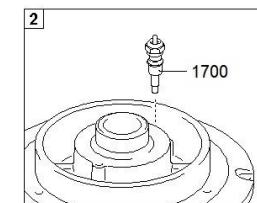
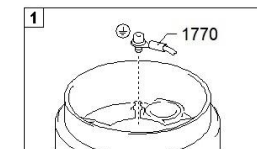
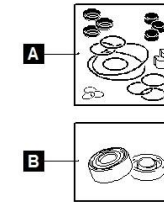
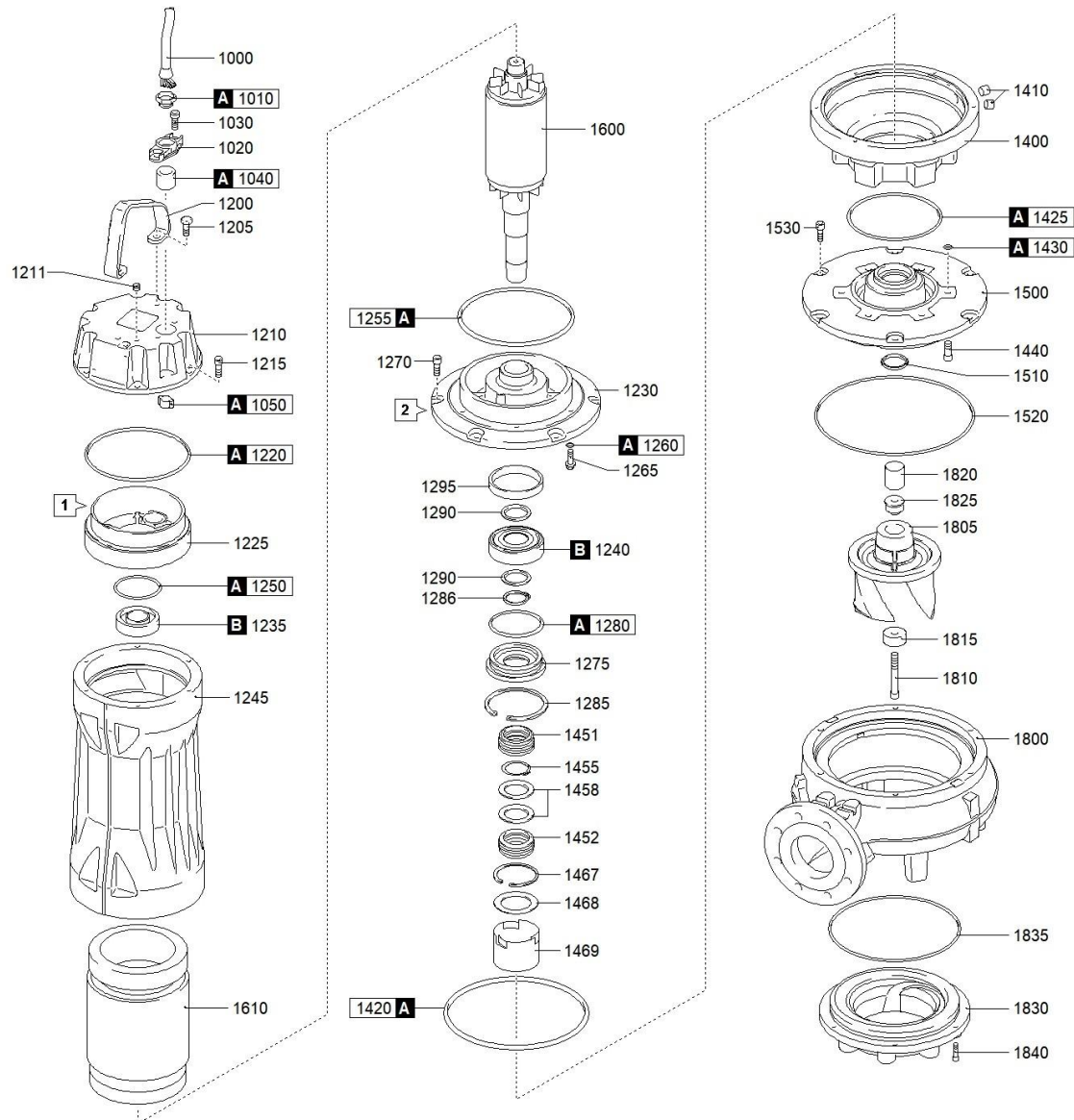




better together

1906.004 - DRG 750/6/150 F0GT5 NGTSB5104YD00NN





better together



1906.004 - DRG 750/6/150 F0GT5 NGTSB5104YD00NN

☰	↕	Scanregn Varenummer	↕	Description	Antal
1000				CAVO POTENZA	1
1010				RING NUT [POWER CABLE]	1
1020				CABLE GLAND [POWER CABLE]	1
1030				SCREW - CABLE GLAND [POWER CABLE]	2
1040				RUBBER GASKET [POWER CABLE]	1
1050				COLLAR CLAMP [POWER CABLE]	1
1200				HANDLE	1
1205				SCREW [HANDLE >> COVER]	2
1210				COVER	1
1211				CAP [TIGHTNESS TEST]	1
1215				SCREW [COVER >> MOTOR CASE]	6
1220				GASKET [COVER >> UPPER BEARING HOLDER]	1
1225				UPPER BEARING HOLDER	1
1230				LOWER BEARING HOLDER	1
1235	518063062Z			UPPER BEARING	1
1240	51803308			LOWER BEARING	1
1245				MOTOR CASE	1
1250				GASKET [UPPER BEARING]	1
1255				GASKET [MOTOR CASE >> LOWER BEARING HOLDER]	1
1260				GASKET [LOWER BEARING HOLDER >> MOTOR CASE]	6
1265				SCREW [LOWER BEARING HOLDER >> MOTOR CASE]	6
1270				SCREW [LOWER BEARING HOLDER >> OIL CHAMBER]	6
1275				LOWER BEARING FLANGE	1
1280				GASKET [LOWER BEARING FLANGE]	1
1285				SEEGER [LOWER BEARING FLANGE >> MECHANICAL SEAL]	1
1286				SEEGER [LOWER BEARING >> LOWER BEARING FLANGE]	1
1290				DISTANCE RING [LOWER BEARING]	2
1400				OIL CHAMBER	1
1410				CAP [OIL CHAMBER]	2
1420				GASKET [LOWER BEARING HOLDER >> OIL CHAMBER]	1
1425				GASKET [OIL CHAMBER >> PUMP PLATE]	1
1430				GASKET [PUMP PLATE >> OIL CHAMBER]	6
1440				SCREW [PUMP PLATE >> OIL CHAMBER]	6
1451				1st MECHANICAL SEAL	1
1452				2nd MECHANICAL SEAL	1
1455				SEEGER [1st MECHANICAL SEAL >> 2nd MECHANICAL SEAL]	1
1458				DISTANCE RING [1st MECHANICAL SEAL >> 2nd MECHANICAL SEAL]	2
1467				SEEGER [2nd MECHANICAL SEAL]	1

1468	DISTANCE RING [2nd MECHANICAL SEAL]	1
1469	BUSH [OIL]	1
1500	PUMP PLATE	1
1520	GASKET [PUMP PLATE >> PUMP BODY]	1
1530	SCREW [PUMP PLATE >> PUMP BODY]	6
1600	SHAFT WITH ROTOR	1
1610	WOUND STATOR	1
1700	HUMIDITY PROBE [OIL CHAMBER]	1
1770	GROUND CABLE CONNECTOR	1
1770	GROUND CABLE CONNECTOR	1
1770	GROUND CABLE CONNECTOR	1
1800	PUMP BODY	1
1805	IMPELLER	1
1810	LOCKING IMPELLER	1
1815	LOCKING WASHER [IMPELLER]	1
1820	BUSH [IMPELLER]	1
1825	RING NUT [IMPELLER]	1
1830	SUCTION FLANGE	1
1835	GASKET [PUMP BODY >> SUCTION FLANGE]	1
1840	SCREW [SUCTION FLANGE >> PUMP BODY]	6