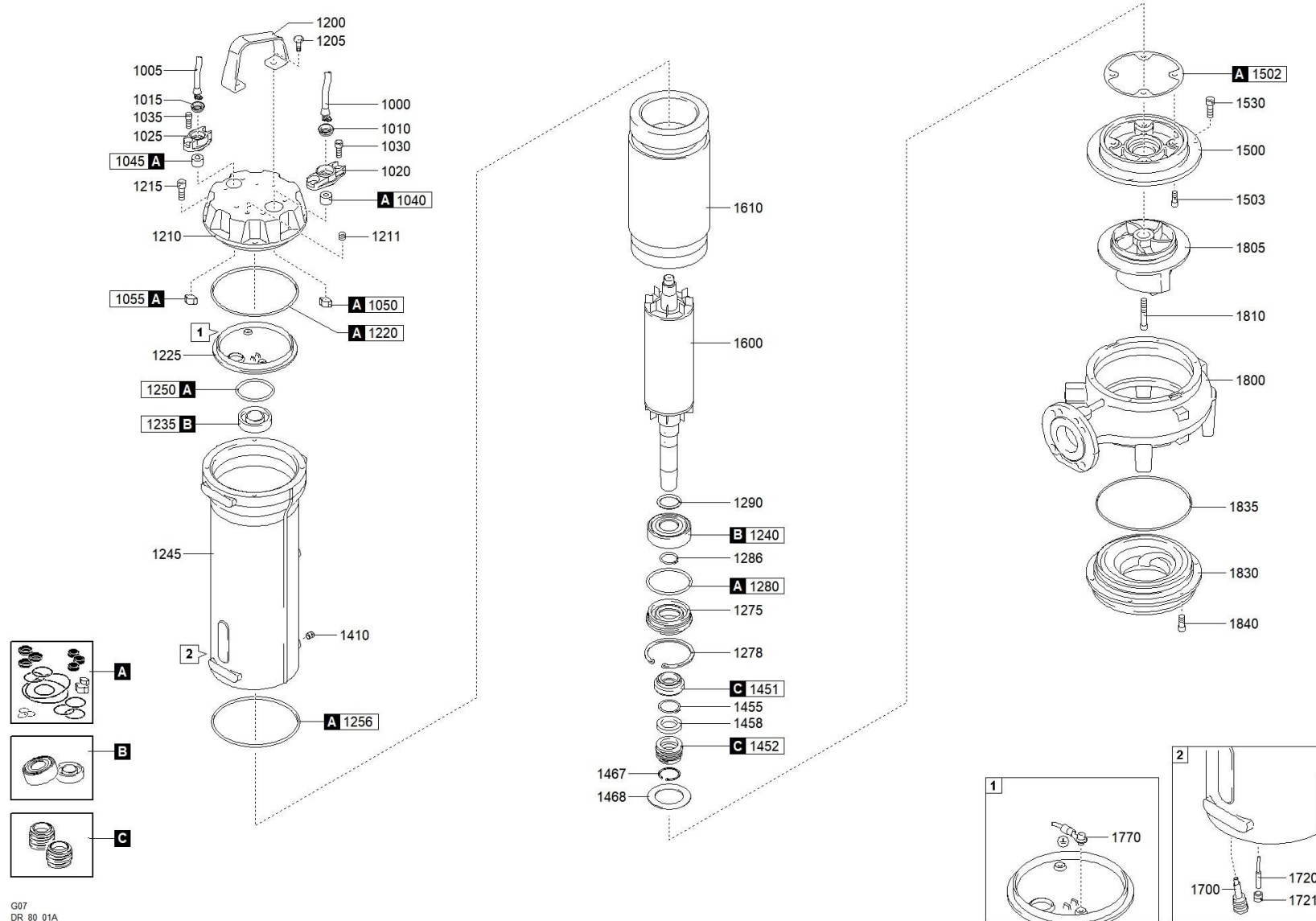




better together

1505.003 - DRG 750/2/80 B0FT5 NGTSB51040N00NN





better together



1505.003 - DRG 750/2/80 B0FT5 NGTSB51040N00NN

	Scanregn Varenummer	Description	Antal	Scanregn Varenummer
A	51416325A	GASKETS KIT	1	51416325A
C	51416325C	MECHANICAL SEALS KIT	1	51416325C
B		BEARINGS KIT	1	
1000		CAVO POTENZA	1	
1010		RING NUT [POWER CABLE]	1	
1020		CABLE GLAND [POWER CABLE]	1	
1030		SCREW - CABLE GLAND [POWER CABLE]	2	
1040		RUBBER GASKET [POWER CABLE]	1	
1050		COLLAR CLAMP [POWER CABLE]	1	
1200		HANDLE	1	
1205		SCREW [HANDLE >> COVER]	2	
1210		COVER	1	
1211		CAP [TIGHTNESS TEST]	1	
1211		CAP [TIGHTNESS TEST]	1	
1215		SCREW [COVER >> MOTOR CASE]	4	
1220		GASKET [COVER >> UPPER BEARING HOLDER]	1	
1225		UPPER BEARING HOLDER	1	
1235	518063052Z	UPPER BEARING	1	518063052Z
1240	518063072ZC3	LOWER BEARING	1	518063072ZC3
1245		MOTOR CASE	1	
1250		GASKET [UPPER BEARING]	1	
1256		GASKET [MOTOR CASE >> PUMP PLATE]	1	
1275		LOWER BEARING FLANGE	1	
1278		SEEGER [LOWER BEARING FLANGE]	1	
1280		GASKET [LOWER BEARING FLANGE]	1	
1286		SEEGER [LOWER BEARING >> LOWER BEARING FLANGE]	1	
1290		DISTANCE RING [LOWER BEARING]	1	
1410		CAP [OIL CHAMBER]	1	
1410		CAP [OIL CHAMBER]	1	
1451		1st MECHANICAL SEAL	1	
1452		2nd MECHANICAL SEAL	1	
1455		SEEGER [1st MECHANICAL SEAL >> 2nd MECHANICAL SEAL]	1	
1458		DISTANCE RING [1st MECHANICAL SEAL >> 2nd MECHANICAL SEAL]	1	
1467		SEEGER [2nd MECHANICAL SEAL]	1	
1468		DISTANCE RING [2nd MECHANICAL SEAL]	1	
1500		PUMP PLATE	1	
1502		GASKET [PUMP PLATE]	1	
1503		SCREW [PUMP PLATE >> MOTOR CASE]	4	

1530		SCREW [PUMP PLATE >> PUMP BODY]	4
1600	514137501600	SHAFT WITH ROTOR	1
1610	514137501610	WOUND STATOR	1
1700		HUMIDITY PROBE [OIL CHAMBER]	1
1800		PUMP BODY	1
1805		IMPELLER	1
1810		LOCKING IMPELLER	1
1830		SUCTION FLANGE	1
1835		GASKET [PUMP BODY >> SUCTION FLANGE]	2
1840		SCREW [SUCTION FLANGE >> PUMP BODY]	6