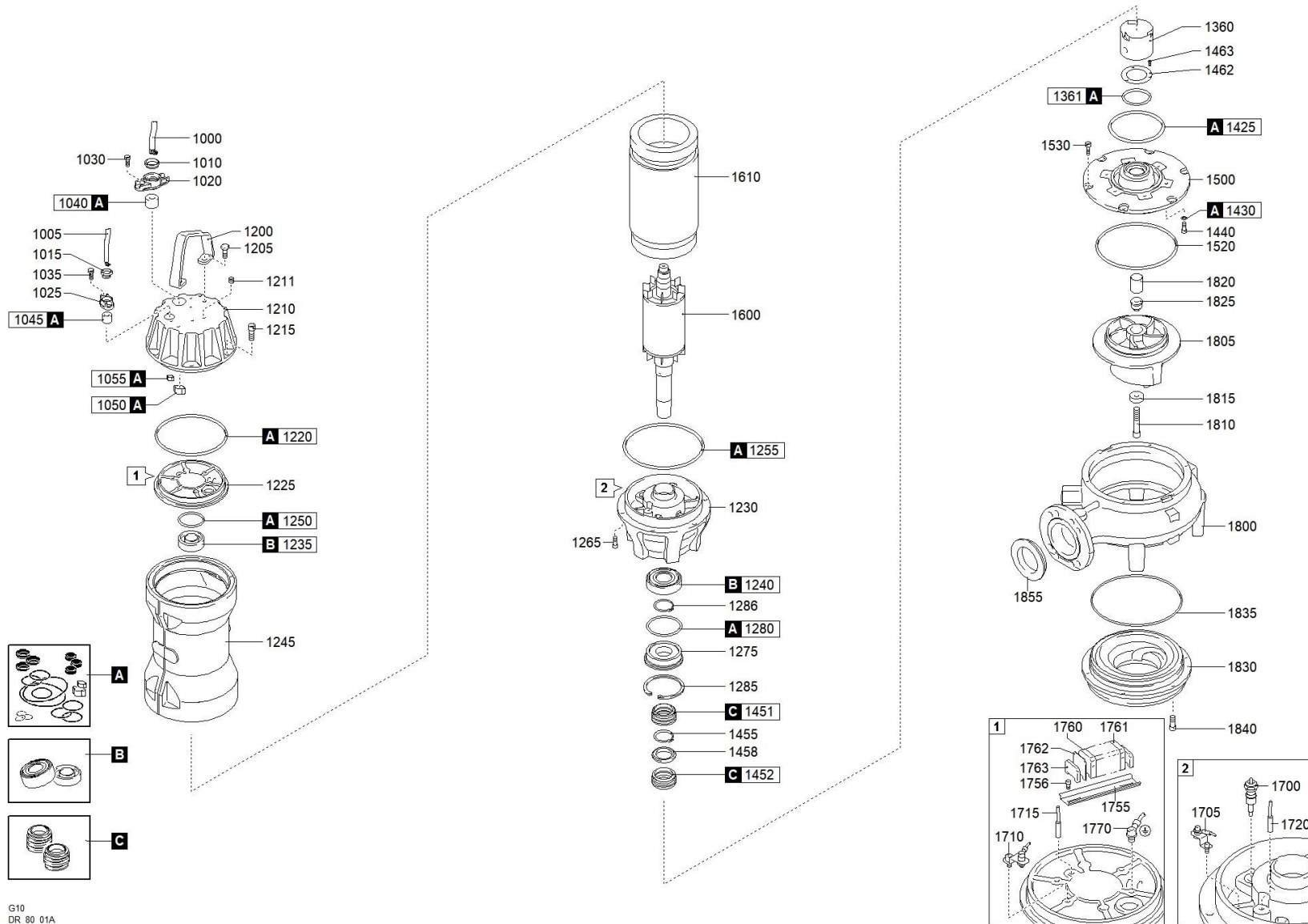




better together

1685.002 - DRG 2000/2/80 W0HT5 NGTSB5104YN00NN





better together



1685.002 - DRG 2000/2/80 W0HT5 NGTSB5104YN00NN

Scanregn Varenummer	↕	Description	Antal	Scanregn Varenummer
A		51416293A GASKETS KIT	1	51416293A
C		51416330C MECHANICAL SEALS KIT	1	51416330C
B		BEARINGS KIT	1	
1000		CAVO POTENZA	1	
1010		RING NUT [POWER CABLE]	1	
1015		RING NUT [SIGNAL CABLE]	1	
1020		CABLE GLAND [POWER CABLE]	1	
1030		SCREW - CABLE GLAND [POWER CABLE]	2	
1040		RUBBER GASKET [POWER CABLE]	1	
1050		COLLAR CLAMP [POWER CABLE]	1	
1200		HANDLE	1	
1205		SCREW [HANDLE >> COVER]	2	
1210		COVER	1	
1211		CAP [TIGHTNESS TEST]	1	
1211		CAP [TIGHTNESS TEST]	1	
1215		SCREW [COVER >> MOTOR CASE]	6	
1220		GASKET [COVER >> UPPER BEARING HOLDER]	1	
1225		UPPER BEARING HOLDER	1	
1230		LOWER BEARING HOLDER	1	
1235	518063062Z	UPPER BEARING	1	5140332129
1240	5180630923RS	LOWER BEARING	1	
1245		MOTOR CASE	1	
1250		GASKET [UPPER BEARING]	1	
1255		GASKET [MOTOR CASE >> LOWER BEARING HOLDER]	1	
1265		SCREW [LOWER BEARING HOLDER >> MOTOR CASE]	6	
1275		LOWER BEARING FLANGE	1	
1280		GASKET [LOWER BEARING FLANGE]	1	
1285		SEEGER [LOWER BEARING FLANGE >> MECHANICAL SEAL]	1	
1286		SEEGER [LOWER BEARING >> LOWER BEARING FLANGE]	1	
1360		BUSH [OIL CHAMBER]	1	
1361		GASKET - BUSH [OIL CHAMBER]	1	
1410		CAP [OIL CHAMBER]	1	
1425		GASKET [OIL CHAMBER >> PUMP PLATE]	1	
1430		GASKET [PUMP PLATE >> OIL CHAMBER]	6	
1430		GASKET [PUMP PLATE >> OIL CHAMBER]	1	
1440		SCREW [PUMP PLATE >> OIL CHAMBER]	6	
1450		MECHANICAL SEAL	1	
1451		1st MECHANICAL SEAL	1	

1452	2nd MECHANICAL SEAL	1
1455	SEEGER [1st MECHANICAL SEAL >> 2nd MECHANICAL SEAL]	1
1458	DISTANCE RING [1st MECHANICAL SEAL >> 2nd MECHANICAL SEAL]	1
1462	RING [MECHANICAL SEAL]	1
1463	SCREW - RING [MECHANICAL SEAL]	3
1500	PUMP PLATE	1
1520	GASKET [PUMP PLATE >> PUMP BODY]	1
1530	SCREW [PUMP PLATE >> PUMP BODY]	6
1600	SHAFT WITH ROTOR	1
1610	WOUND STATOR	1
1700	HUMIDITY PROBE [OIL CHAMBER]	1
1700	HUMIDITY PROBE [OIL CHAMBER]	1
1755	BRACKET [TERMINAL BOARD]	1
1756	SCREW - BRACKET [TERMINAL BOARD]	2
1756	SCREW - BRACKET [TERMINAL BOARD]	2
1760	POWER CABLE TERMINAL [TERMINAL BOARD]	6
1760	POWER CABLE TERMINAL [TERMINAL BOARD]	6
1761	SIGNAL CABLE TERMINAL [TERMINAL BOARD]	3
1762	TERMINAL CAP [TERMINAL BOARD]	1
1763	TERMINAL LOCKING [TERMINAL BOARD]	2
1770	GROUND CABLE CONNECTOR	1
1770	GROUND CABLE CONNECTOR	1
1770	GROUND CABLE CONNECTOR	1
1800	PUMP BODY	1
1805	IMPELLER	1
1810	LOCKING IMPELLER	1
1815	LOCKING WASHER [IMPELLER]	1
1820	BUSH [IMPELLER]	1
1825	RING NUT [IMPELLER]	1
1830	SUCTION FLANGE	1
1835	GASKET [PUMP BODY >> SUCTION FLANGE]	1
1840	SCREW [SUCTION FLANGE >> PUMP BODY]	6