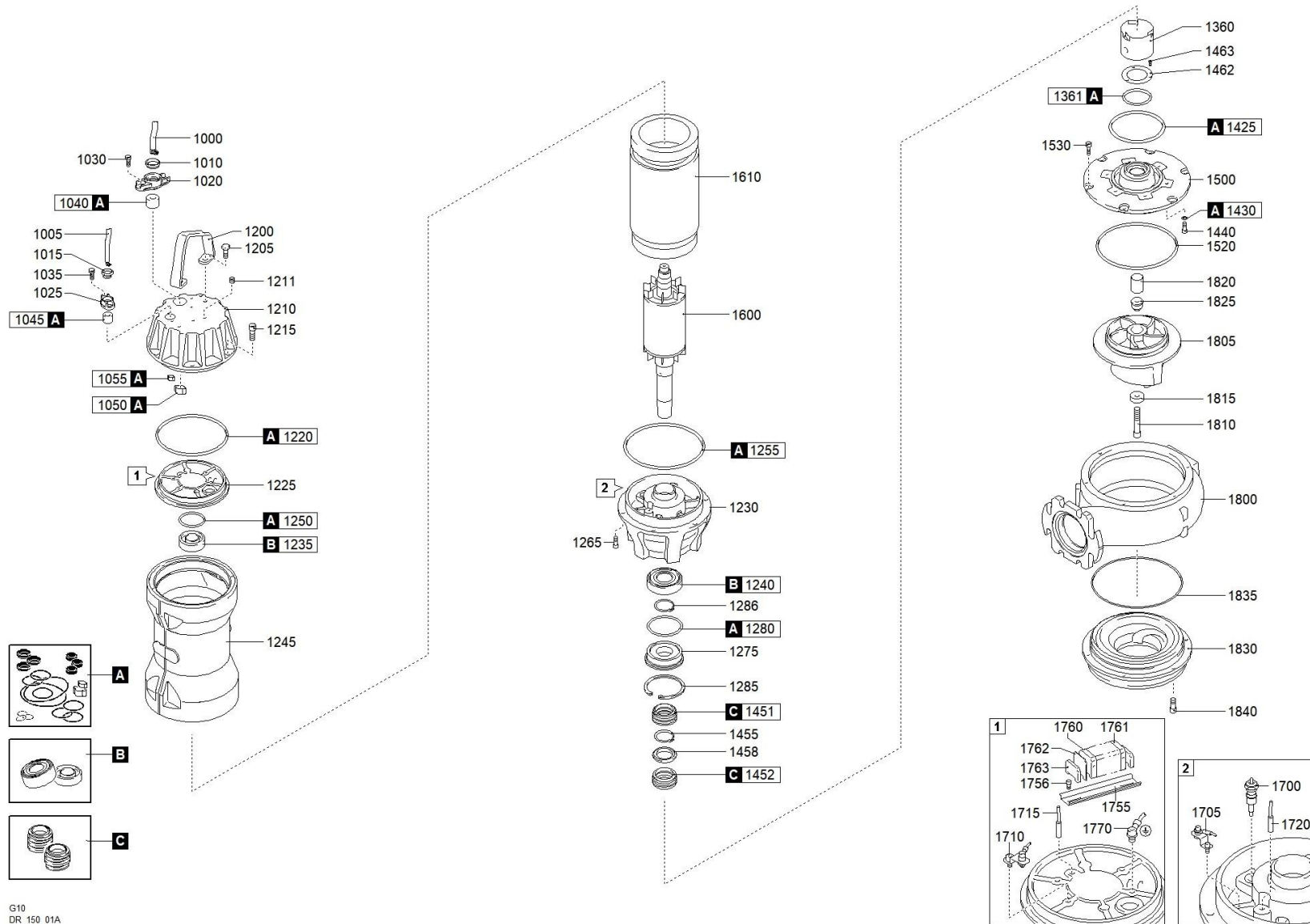




better together

1660.001 - DRG 1200/4/150 A0HT5 NGTSB5104YN00NN





better together



1660.001 - DRG 1200/4/150 A0HT5 NGTSB5104YN00NN

Scanregn Varenummer	↕	Description	Antal
A	51416293A	GASKETS KIT	1
C	51416330C	MECHANICAL SEALS KIT	1
B		BEARINGS KIT	1
1000		CAVO POTENZA	1
1010		RING NUT [POWER CABLE]	1
1020		CABLE GLAND [POWER CABLE]	1
1030		SCREW - CABLE GLAND [POWER CABLE]	2
1040		RUBBER GASKET [POWER CABLE]	1
1050		COLLAR CLAMP [POWER CABLE]	1
1200		HANDLE	1
1205		SCREW [HANDLE >> COVER]	2
1210		COVER	1
1210		COVER	1
1211		CAP [TIGHTNESS TEST]	1
1211		CAP [TIGHTNESS TEST]	1
1215		SCREW [COVER >> MOTOR CASE]	6
1220		GASKET [COVER >> UPPER BEARING HOLDER]	1
1225		UPPER BEARING HOLDER	1
1230		LOWER BEARING HOLDER	1
1235	518063062Z	UPPER BEARING	1
1240	5180630923RS	LOWER BEARING	1
1245		MOTOR CASE	1
1250		GASKET [UPPER BEARING]	1
1255		GASKET [MOTOR CASE >> LOWER BEARING HOLDER]	1
1265		SCREW [LOWER BEARING HOLDER >> MOTOR CASE]	6
1275		LOWER BEARING FLANGE	1
1280		GASKET [LOWER BEARING FLANGE]	1
1285		SEEGER [LOWER BEARING FLANGE >> MECHANICAL SEAL]	1
1286		SEEGER [LOWER BEARING >> LOWER BEARING FLANGE]	1
1360		BUSH [OIL CHAMBER]	1
1361		GASKET - BUSH [OIL CHAMBER]	1
1410		CAP [OIL CHAMBER]	1
1425		GASKET [OIL CHAMBER >> PUMP PLATE]	1
1430		GASKET [PUMP PLATE >> OIL CHAMBER]	6
1430		GASKET [PUMP PLATE >> OIL CHAMBER]	1
1440		SCREW [PUMP PLATE >> OIL CHAMBER]	6
1450		MECHANICAL SEAL	1
1451		1st MECHANICAL SEAL	1

1452		2nd MECHANICAL SEAL	1
1455		SEEGER [1st MECHANICAL SEAL >> 2nd MECHANICAL SEAL]	1
1458		DISTANCE RING [1st MECHANICAL SEAL >> 2nd MECHANICAL SEAL]	1
1462		RING [MECHANICAL SEAL]	1
1463		SCREW - RING [MECHANICAL SEAL]	3
1500		PUMP PLATE	1
1520		GASKET [PUMP PLATE >> PUMP BODY]	1
1530		SCREW [PUMP PLATE >> PUMP BODY]	6
1600		SHAFT WITH ROTOR	1
1610	514164001610	WOUND STATOR	1
1700	514163301410	HUMIDITY PROBE [OIL CHAMBER]	1
1700		HUMIDITY PROBE [OIL CHAMBER]	1
1755		BRACKET [TERMINAL BOARD]	1
1756		SCREW - BRACKET [TERMINAL BOARD]	2
1756		SCREW - BRACKET [TERMINAL BOARD]	2
1760		POWER CABLE TERMINAL [TERMINAL BOARD]	6
1761		SIGNAL CABLE TERMINAL [TERMINAL BOARD]	3
1762		TERMINAL CAP [TERMINAL BOARD]	1
1763		TERMINAL LOCKING [TERMINAL BOARD]	2
1770		GROUND CABLE CONNECTOR	1
1770		GROUND CABLE CONNECTOR	1
1770		GROUND CABLE CONNECTOR	1
1800		PUMP BODY	1
1805	514164001805	IMPELLER	1
1810		LOCKING IMPELLER	1
1815		LOCKING WASHER [IMPELLER]	1
1820		BUSH [IMPELLER]	1
1825		RING NUT [IMPELLER]	1
1830		SUCTION FLANGE	1
1835		GASKET [PUMP BODY >> SUCTION FLANGE]	1
1840		SCREW [SUCTION FLANGE >> PUMP BODY]	6
1855		DISCHARGE GASKET	1