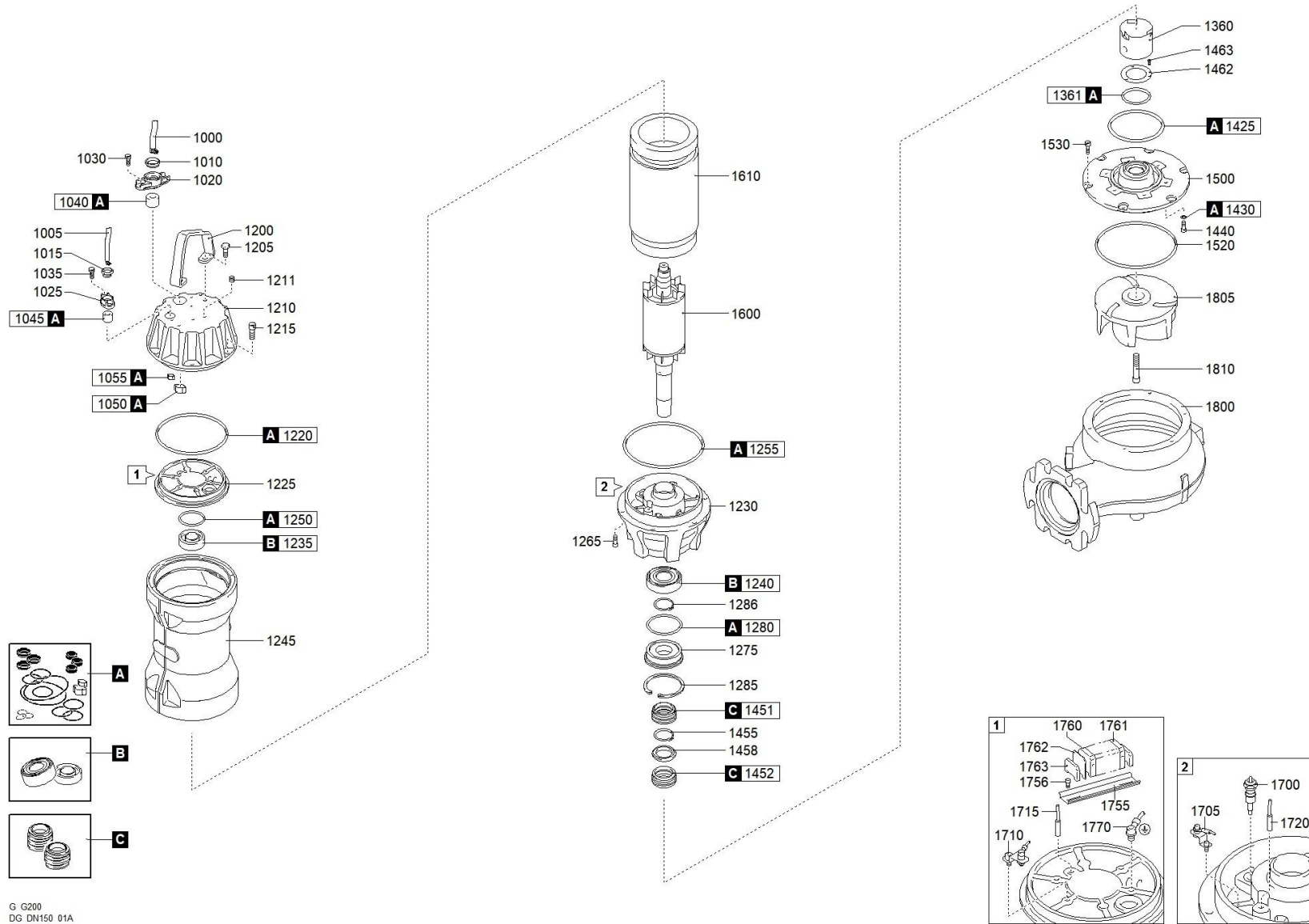




better together

1656.001 - DGG 2000/4/150 A0HT5 NGTSB5104YN00NN



G G200
DG DN150 01A



better together



1656.001 - DGG 2000/4/150 A0HT5 NGTSB5104YN00NN

| | Scanregn Varenummer | Description | Antal |
|------|---------------------|--|-------|
| A | 51416293A | GASKETS KIT | 1 |
| C | 51416330C | MECHANICAL SEALS KIT | 1 |
| B | | BEARINGS KIT | 1 |
| 1000 | | CAVO POTENZA | 1 |
| 1010 | | RING NUT [POWER CABLE] | 1 |
| 1010 | | RING NUT [POWER CABLE] | 1 |
| 1020 | | CABLE GLAND [POWER CABLE] | 1 |
| 1020 | | CABLE GLAND [POWER CABLE] | 1 |
| 1030 | | SCREW - CABLE GLAND [POWER CABLE] | 2 |
| 1040 | | RUBBER GASKET [POWER CABLE] | 1 |
| 1055 | | COLLAR CLAMP [SIGNAL CABLE] | 1 |
| 1200 | | HANDLE | 1 |
| 1205 | | SCREW [HANDLE >> COVER] | 2 |
| 1210 | | COVER | 1 |
| 1211 | | CAP [TIGHTNESS TEST] | 1 |
| 1211 | | CAP [TIGHTNESS TEST] | 1 |
| 1215 | | SCREW [COVER >> MOTOR CASE] | 6 |
| 1220 | | GASKET [COVER >> UPPER BEARING HOLDER] | 1 |
| 1225 | | UPPER BEARING HOLDER | 1 |
| 1230 | | LOWER BEARING HOLDER | 1 |
| 1235 | 518063062Z | UPPER BEARING | 1 |
| 1240 | 51803309 | LOWER BEARING | 1 |
| 1245 | | MOTOR CASE | 1 |
| 1250 | | GASKET [UPPER BEARING] | 1 |
| 1255 | | GASKET [MOTOR CASE >> LOWER BEARING HOLDER] | 1 |
| 1265 | | SCREW [LOWER BEARING HOLDER >> MOTOR CASE] | 6 |
| 1275 | | LOWER BEARING FLANGE | 1 |
| 1280 | | GASKET [LOWER BEARING FLANGE] | 1 |
| 1285 | | SEEGER [LOWER BEARING FLANGE >> MECHANICAL SEAL] | 1 |
| 1286 | | SEEGER [LOWER BEARING >> LOWER BEARING FLANGE] | 1 |
| 1360 | | BUSH [OIL CHAMBER] | 1 |
| 1361 | | GASKET - BUSH [OIL CHAMBER] | 1 |
| 1410 | | CAP [OIL CHAMBER] | 1 |
| 1425 | | GASKET [OIL CHAMBER >> PUMP PLATE] | 1 |
| 1430 | | GASKET [PUMP PLATE >> OIL CHAMBER] | 6 |
| 1430 | | GASKET [PUMP PLATE >> OIL CHAMBER] | 1 |
| 1440 | | SCREW [PUMP PLATE >> OIL CHAMBER] | 6 |
| 1450 | | MECHANICAL SEAL | 1 |

| | | |
|------|--|---|
| 1451 | 1st MECHANICAL SEAL | 1 |
| 1452 | 2nd MECHANICAL SEAL | 1 |
| 1455 | SEEGER [1st MECHANICAL SEAL >> 2nd MECHANICAL SEAL] | 1 |
| 1458 | DISTANCE RING [1st MECHANICAL SEAL >> 2nd MECHANICAL SEAL] | 1 |
| 1462 | RING [MECHANICAL SEAL] | 1 |
| 1463 | SCREW - RING [MECHANICAL SEAL] | 3 |
| 1500 | PUMP PLATE | 1 |
| 1520 | GASKET [PUMP PLATE >> PUMP BODY] | 1 |
| 1530 | SCREW [PUMP PLATE >> PUMP BODY] | 6 |
| 1600 | SHAFT WITH ROTOR | 1 |
| 1610 | WOUND STATOR | 1 |
| 1700 | HUMIDITY PROBE [OIL CHAMBER] | 1 |
| 1700 | HUMIDITY PROBE [OIL CHAMBER] | 1 |
| 1755 | BRACKET [TERMINAL BOARD] | 1 |
| 1756 | SCREW - BRACKET [TERMINAL BOARD] | 2 |
| 1756 | SCREW - BRACKET [TERMINAL BOARD] | 2 |
| 1760 | POWER CABLE TERMINAL [TERMINAL BOARD] | 6 |
| 1761 | SIGNAL CABLE TERMINAL [TERMINAL BOARD] | 3 |
| 1762 | TERMINAL CAP [TERMINAL BOARD] | 1 |
| 1763 | TERMINAL LOCKING [TERMINAL BOARD] | 2 |
| 1770 | GROUND CABLE CONNECTOR | 1 |
| 1770 | GROUND CABLE CONNECTOR | 1 |
| 1770 | GROUND CABLE CONNECTOR | 1 |
| 1800 | PUMP BODY | 1 |
| 1805 | IMPELLER | 1 |
| 1810 | LOCKING IMPELLER | 1 |