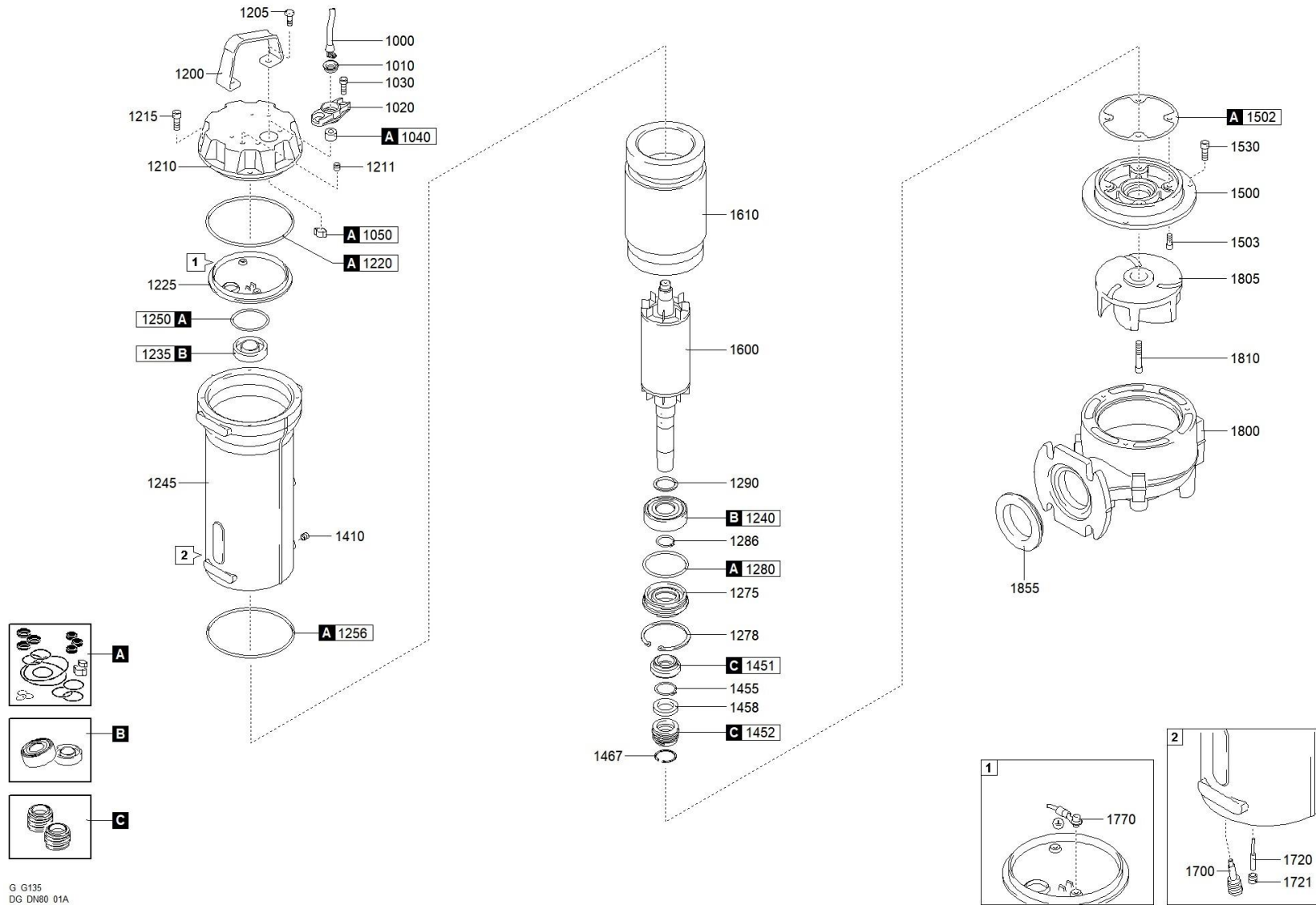




better together

1453.002 - DGG 200/4/80 E0ET5 NGTSB51040S00NN



G G135  
DG DN80 01A



better together



1453.002 - DGG 200/4/80 E0ET5 NGTSB51040S00NN

	↕	↕	Varenummer Scanregn	↕	Description	Antal
A			51413300A		GASKETS KIT	1
C			51413300C		MECHANICAL SEALS KIT	1
B					BEARINGS KIT	1
1000					CAVO POTENZA	1
1010					RING NUT [POWER CABLE]	1
1020					CABLE GLAND [POWER CABLE]	1
1030					SCREW - CABLE GLAND [POWER CABLE]	2
1040					RUBBER GASKET [POWER CABLE]	1
1050					COLLAR CLAMP [POWER CABLE]	1
1200					HANDLE	1
1205					SCREW [HANDLE >> COVER]	2
1210					COVER	1
1211					CAP [TIGHTNESS TEST]	1
1215					SCREW [COVER >> MOTOR CASE]	2
1220					GASKET [COVER >> UPPER BEARING HOLDER]	1
1225			514142151225		UPPER BEARING HOLDER	1
1235			518062032Z		UPPER BEARING	1
1240			518063062Z		LOWER BEARING	1
1245					MOTOR CASE	1
1250					GASKET [UPPER BEARING]	1
1256					GASKET [MOTOR CASE >> PUMP PLATE]	1
1275			514142151275		LOWER BEARING FLANGE	1
1278					SEEGER [LOWER BEARING FLANGE]	1
1280					GASKET [LOWER BEARING FLANGE]	1
1286					SEEGER [LOWER BEARING >> LOWER BEARING FLANGE]	1
1290					DISTANCE RING [LOWER BEARING]	1
1410					CAP [OIL CHAMBER]	1
1451					1st MECHANICAL SEAL	1
1452					2nd MECHANICAL SEAL	1
1455					SEEGER [1st MECHANICAL SEAL >> 2nd MECHANICAL SEAL]	1
1458					DISTANCE RING [1st MECHANICAL SEAL >> 2nd MECHANICAL SEAL]	1
1467					SEEGER [2nd MECHANICAL SEAL]	1
1500					PUMP PLATE	1
1502					GASKET [PUMP PLATE]	1
1503					SCREW [PUMP PLATE >> MOTOR CASE]	2
1520					GASKET [PUMP PLATE >> PUMP BODY]	1
1530					SCREW [PUMP PLATE >> PUMP BODY]	2
1600					SHAFT WITH ROTOR	1

1610	WOUND STATOR	1
1700	HUMIDITY PROBE [OIL CHAMBER]	1
1800	PUMP BODY	1
1805	IMPELLER	1
1810	LOCKING IMPELLER	1